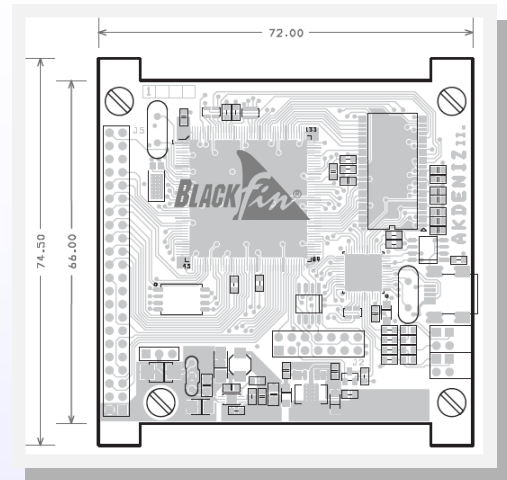


**LUMILOGIC Research & Development**  
 „Your bright ideas with our powerful hardware solutions...“

# AKDENIZ

## DSP Platform Board *BLACKfin*<sup>®</sup>

Universal DSP platform board based on a high-performance *Analog Devices ADSP-BF-532* digital signal processor from the *Blackfin*<sup>®</sup> family. Provides full power and reset management with an external SDRAM, SPI FLASH MEMORY and USB2.0 HighSpeed interface on a single board. Other peripherals are available through the universal 44 pin 2.54 mm pitch connector.



### AKDENIZ Features:

CPU	Analog Devices Blackfin <sup>®</sup> DSP ADSP-BF-532
CLOCK	Up to 400 MHz core clock, up to 133 MHz peripheral clock
RAM	32MB SDRAM up to 133 MHz (64 MB optional)
FLASH	4MB SPI FLASH (up to 16 MB optional)
USB2.0	1x, memory mapped FIFO Cypress CY7C68013A, USB mini-B (up to 4.5 MB/s continual data flow to PC)
POWER SUPPLY	5—15V DC, USB or EXT source
INDICATORS	3x LED available through simple 1-wire interface, 1x power ind. LED
DEBUG	JTAG connector (Analog Devices standard pinout)
INTERFACE	44 pin 2.54 mm pitch connector: 8-bit PPI, 5x GPIO, SPORT0, SPORT1, UART, SPI, 3x TIMER, RESET IN/OUT, DC IN, 3V3 OUT
TEMP. RANGE	Standard 0°C to +70°C / Industrial -45°C to +80°C
DIMENSIONS	72mm x 74.5mm (72mm x 66mm) Board fits into HAMMOND standard box (e.g. type 1455J1201)
ADDITIONAL FEATURES	<ul style="list-style-type: none"> <li>• USB drivers and library for easy interface with C, C++, C#</li> <li>• Boot-FLASH programmable through USB (speeds up development)</li> <li>• Applicable for uCLinux</li> </ul>

Applications: signal acquisition and real-time processing, multimedia applications, vision systems, real-time control systems, education and prototyping etc.

**Contact and product support: [akdeniz@lumilogic.cz](mailto:akdeniz@lumilogic.cz)**

**[www.lumilogic.cz](http://www.lumilogic.cz)**

LUMILOGIC s.r.o., Českomalínska 767/16, Praha 6, 160 00, Czech Republic